



International J/24 Class Association

Notice of Race

WORLD CHAMPIONSHIP

13/8-20/8 2010

**Malmö Segel Sällskap
Sweden**



EVENT

The event is a World Championship for the International J/24 class.

ORGANIZING AUTHORITY

Malmö Segel Sällskap (MSS)
Småbåtshamnen
216 12 Limhamn, Sweden
Tel +46 40 15 44 48
www.j24worlds2010.com

DATES

August 13th to 20th 2010

Malmö Segel Sällskap in conjunction with the Swedish and International J/24 Class Associations

1 RULES

- 1.1 The regatta will be governed by the rules as defined in the Racing Rules of Sailing (RRS) 2009-2012.
- 1.2 No national prescriptions apply.
- 1.3 The Regatta Regulations of the International J/24 Class (IJCA) will apply.
- 1.4 Racing rules 41, 44.3(a), and 61.1 (a) will be changed as follows:

Rule 41: From the time a boat leaves her mooring for the first race of each day until she returns to her mooring and while not racing, she shall not receive outside help except as permitted by rules 41(a) through (d) from any outside source except other competitors and official boats under the direction of the organizing authority. While racing, rule 41 applies without modification. This also changes the preamble to Part 4 of the rules.

Rule 44.3(a) Is changed so that the yellow flag (code flag "T" is acceptable) used by a boat taking a scoring penalty shall have a hoist of not less than 150 mm and a fly of not less than 200 mm.

Rule 61.1 (a) is changed so that the red flag displayed by a protesting boat shall have a hoist of not less than 150 mm and a fly of not less than 200 mm.
- 1.5 Bow numbers will be assigned to each boat and will be used as the identification for the boat during the regatta. Bow numbers shall be applied in accordance with the instructions supplied with the numbers and shall remain affixed until after a boat hauls out at the end of the regatta.
- 1.6 If there is a conflict between languages the English text will take precedence.

2 ADVERTISING

- 2.1 Advertising is ruled by RRS 80 and ISAF Reg. 20.
- 2.2 Boats may be required to display advertising chosen and supplied by the organizing authority. (See ISAF Regulation 20.3 (d).)

3 ELIGIBILITY REQUIREMENTS AND ENTRY

- 3.1 The World Championship is open to J/24 Class boats as defined by the IJCA Rules that qualify as prescribed in the IJCA Regatta Regulations and whose entries are accepted by the Organizing Authority.
- 3.2 For World Championships, helmsmen must be either nationals or residents, and members of the National J/24 Class Association of the country they represent.
- 3.3 Eligible boats may register by completing the attached form and sending it, together with the required fees, to
Malmö Segel Sällskap (MSS)
Småbåtshamnen
216 12 Limhamn, Sweden by May 15th.
After May 15th you may enter on-line at
www.j24worlds2010.com

The advance entry shall include the following:

Helmsman by name
Crew list by name
Helmsman home address
Telephone number
E-mail address
Country
Sail number
Own boat/New Charter boat/Charter Boat

- 3.4 If there are co-skippers, one of them shall be designated as the primary skipper for this regatta.

4 FEES

- 4.1 The entry fee is 6000 SEK and is paid to

Malmö Segel Sällskap
Malmö Segel Sällskap postgiro: 3 97 90-1
Bank: Swedbank
Bank details: IBAN nr SE94 8000 0008 2149 3409 2700
Swift Address: SWEDSESS (for payments to Malmö Segel Sällskap from EU-countries and Switzerland)

Payment via Credit card will be available from 1st of february.

An extra fee of 1000 SEK will be charged for late entrie received after July 14, 2010.

- 4.2 Competitors participate in the regatta entirely at their own risk. See RRS 4, Decision to Race. The organizing authority will not accept any liability for material damage or personal injury or death sustained in conjunction with or prior

to, during, or after the regatta.

5 QUALIFYING SERIES AND FINAL SERIES

5.1 The races will be sailed in one fleet.

6 SCHEDULE

6.1 Registration will take place from 09.00 hrs to 20.00 hrs Friday and Saturday on 13th – 14th August 2010 at the race office at the Malmö Segel Sällskap in Malmö at Limhamns Småbåtshamn.

6.2 Measurement and inspection will take place from 09.00 hrs to 20.00 hrs on Thursday to Saturday August 12th to 14th 2010.
Boats of Class officers, charter boats and competitors working on the regatta will be given priority on Thursday.
Crew Weigh-In also from 09.00 hrs to 13.00 hours on Sunday 15th August.

6.3 Opening ceremony
Sunday evening the 15th August at 19:00 hrs at the City Town Hall at Stortorget, Malmö.

6.4 The Practice race is scheduled at 15th of August. Warning signal at 14:00 at the race area.

6.5 The scheduled time of the warning signal for Championship racing is 10:30 hrs the 16th -20th August
Ten races are scheduled

6.6 Skippers meeting will be in conjunction with the opening ceremony.

6.7 Prize giving ceremony
20th August at 20:30

6.8 Dates of racing:

Sunday August 15th	1 practice race
Monday August 16th	2 races scheduled*
Tuesday August 17th	2 races scheduled*
Wednesday August 18th	2 races scheduled*
Thursday August 19th	2 races scheduled*
Friday August 20th	2 races scheduled*

On August 20th no warning signal will be made after 14:00 hrs.

*One extra race may be sailed, provided that the regatta becomes no more than one race ahead of schedule and the change is made according to provisions in the Sailing Instructions

7 REGISTRATION AND MEASUREMENT CHECK

7.1 At registration, each boat shall present:

(a) A valid J/24 measurement certificate issued by the IJCA Class Office including Part C: Inventory of Required and Optional Equipment.

(b) Proof of current marine liability insurance coverage

(c) Proof of IJCA membership in the Country they represent for the owner and helmsperson.

7.2 All competitors will be weighed during registration. Competitors must have a passport or other photo identification at weigh-in.

7.3 Inspection and measurement will be carried out on all boats and sails in accordance with the class rules.

7.4 Boats will be subject to inspection at any time during the regatta.

8 **SAILING INSTRUCTIONS**

8.1 The sailing instructions will be available upon completion of registration.

9 **VENUE**

9.1 The launching and registration harbour will be at Malmö Segel Sällskap, Limhamns. maps and driving instruction attached at Appx A)
Chart number 921, Öresund södra.

9.2 The racing area is outside Limhamn, Malmö in Öresund
The regatta base harbor will be the Västra hamnen. (maps and instructions are at Appx B)
Distance between race area and base harbor is depending of current and wind conditions. Usually less than 2 NM.

10 **COURSES AND RACE FORMAT**

10.1 The courses to be sailed will be windward/leeward with 5 legs, 3 windward and 2 leeward, or 4 legs, 2 windward and 2 leeward. The target time for races is approximately 75 to 90 minutes.

10.2 An offset mark at the weather mark will be used.

10.3 A gate at the leeward mark will be used.

11 **PROTESTS AND PENALTY SYSTEMS**

11.1 The scoring penalty, RRS 44.3, will apply. RRS 44.2, One Turn and Two Turns Penalties, is deleted.

11.2 Decisions of the International jury will be final as provided in RRS 70.5.

11.3 The Race Committee may also announce the numbers of the boats that have broken starting rules via VHF.

11.4 Arbitration may be used prior to the protest hearing for protests involving the rules Part 2.

11.5 Rule 64.1 will be changed in the Sailing Instructions to permit penalties other than disqualification for breaking some IJCA rules.

12 **SCORING**

- 12.1 Four races are required to be completed to constitute a championship.
- 12.2 When fewer than five races have been completed, a boat's series score will be the total of her race scores. When five or more races have been sailed, a boat's series score will be the total of her race scores excluding her worst score. This modifies Appendix A.
- 12.3 Boats failing to finish within 45 minutes after the first boat sails the course and finishes will be scored Time Limit Expired (TLE) without a hearing. Boats scored TLE will be scored points equal to the number of boats finishing within the time limit plus two points by the race committee without a hearing. This changes rule A4.2, A5, and A11.

13 SUPPORT BOATS

Support boats shall comply with 1.4.

14 BERTHING

Boats shall be kept in their assigned places in the harbour.

15 HAUL-OUT RESTRICTIONS

- 15.1 Boats shall be afloat by 11.00 hrs on Sunday 15th August 2010 and shall not be hauled out during the regatta except with and according to the terms of prior written permission of the jury.
- 15.2 Hauling of boats at completion of the regatta shall be done on August 20th pm and 21th.

16 OTHER PROHIBITED ACTIONS

- 16.1 Careening by any means for the purpose of cleaning or inspecting the hull is prohibited during the regatta.
- 16.2 Underwater breathing apparatus, plastic pools or their equivalent shall not be used during the regatta. The hull may be cleaned at any time by swimming or keelhauling using ropes or cloth.

17 RADIO COMMUNICATION

- 17.1 Except in an emergency, a boat shall neither make radio or other data transmissions while racing nor receive radio or data communication not available to all boats. This restriction also applies to mobile telephones.
- 17.2 It is the intent of the organizing authority and race committee to use marine VHF radios to communicate with the fleet when outside the harbour.

18 PRIZES

- 18.1 Prizes will be awarded to at least the top 15% of boats entered.
- 18.2 Prizes for daily races will be awarded to the winner of each race.

19 DISCLAIMER OF LIABILITY

- 19.1 Competitors participate in the regatta entirely at their own risk. See rule 4, Decision to Race. The organizing authority will not accept any liability for material damage or personal injury or death sustained in conjunction with or prior to, during, or after the regatta.
- 19.2 All competitors will also be required to sign a Competitor Liability Waiver form to be provided in the registration package.

20 INSURANCE

Each participating boat shall be insured with valid third-party liability insurance with a minimum cover of 1 000 000 Euro per event or the equivalent.

21 MEDIA RIGHTS

- 21.1 Competitors give absolute right and permission to the IJCA, the Swedish J/24 Class Association, Malmö Segel Sällskap and the event sponsors to use, publish, broadcast or otherwise distribute for promotional, advertising or any other purpose, any images and sound recorded during the event of persons and boats free of any charge.

22 FURTHER INFORMATION

For hotels and living: <http://www.malmo.se/hotel> Malmö Segel Sällskap
Småbåtshamnen 216 12 Limhamn, Sweden
Tel +46 40 15 44 48
mss@mss.m.se
www.mss.m.se

23 CHANGES

Any changes to this Notice of race will be posted on the website
www.J24worlds2010.com .

Appendix A

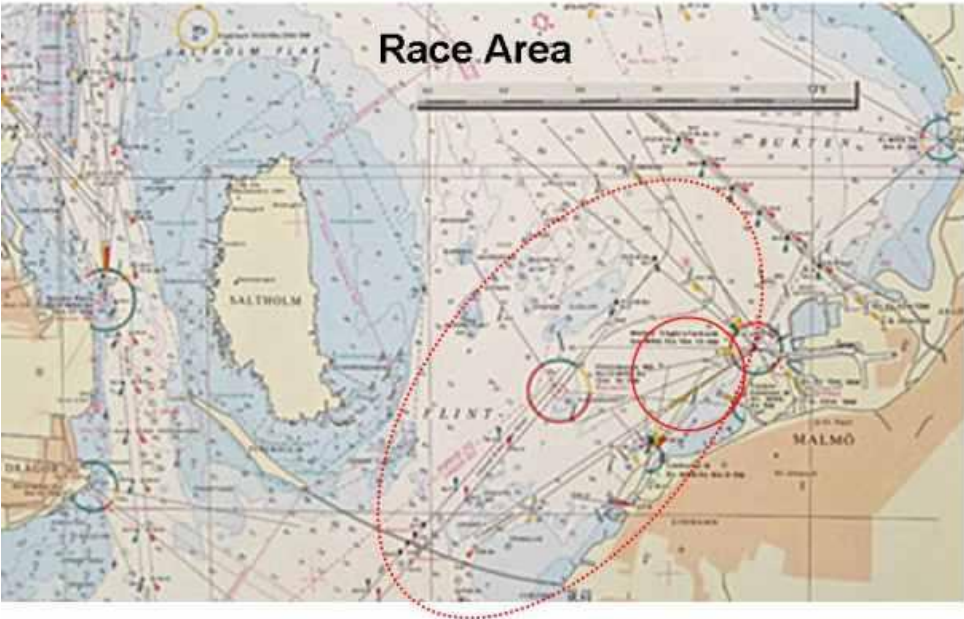


Chart number 921, Öresund södra (Öresund south part)

